

Tokyo Metropolitan University

Graduate School of Urban Environmental Sciences

Department of Urban Science and Policy



SUGIHARA, Yoko
Associate Professor•Ph.D. (Health Science)

- Health Sociology
- Elderly Welfare
- Social Gerontology
- Public Health
- Theory, Research, and Practice in Urban Health and Well-being

E-mail: sugihara@tmu.ac.jp
URL: <http://www.tmu.ac.jp/staffist/data/sa/12757.html>



Social support for elderly people and their caregivers.

My research focuses on social determinants of health (e.g., socioeconomic status, social relations, and community environment), stress and support, and community empowerment and health. Current research projects include "Evaluating long-term care policy", "Productive aging and health", and "Socioeconomic health disparities in the elderly population". I teach theory, research methods, and practice for improving the health of individuals and families.



TAMAGAWA, Hidenori
Professor•Doctor of Engineering

- Urban and Regional Analysis
- Urban and Regional Planning
- Theory of Urban Analysis and Planning
- Applied Studies Using Geographic Information System
- Urban Analysis

E-mail: htama@tmu.ac.jp
URL: <http://www.ues.tmu.ac.jp/cus/>



Connecting urban analysis theory and simulation with applied research.

I study links between urban analysis and urban planning. I have researched new aspects of the spatial territory model, particularly the implications of gravity models for spatial patterns considering the urban theory of Jane Jacobs. I use many methodologies and focus on the indwelling potential of city and urban space. I also study applied research, including compact cities and urban sustainability.



WADA, Kiyomi
Professor•Ph.D. (Sociology)

- Urban Sociology
- Community Studies
- Urban Problems and Urban Policy Studies
- Comparative Studies of Urban Society and Community Buildings
- Urban Community

E-mail: wada-kiyomi@tmu.ac.jp
URL: <http://www.urbanpolicy.tmu.ac.jp/wada.html>



Trip in 2016 to Taito Ward, Tokyo for research on community buildings.

I study Urban Sociology and Community Studies. I am researching community buildings and policies in metropolises and provincial cities in Japan to understand community building activities during the 1970s. I am also conducting a comparative study on community buildings in Japan and Taiwan.



YAMAMOTO, Kahoruko
Associate Professor•Ph.D. (Sociology)

- Urban Sociology
- Multicultural Societies
- Urban Communities
- Introduction to Urban Sociology
- Civil Society Study

E-mail: kahoruko@tmu.ac.jp
URL: <http://www.tmu.ac.jp/staffist/data/ya/872.html>



Local people are demanding affordable housing in Vancouver, Canada.

I am researching the social impact of changes in urban inner-city areas. Inner-city areas are close to downtown areas and often have low-income and immigrant residents. Many of these areas have faced poverty and social issues; however, they are also places where many types of people gather, so there are always changes in culture, businesses and social activities.

Master's and PhD Thesis Subjects

recent examples from the former Department of Urban Science

- Relationship between the impression of streetscapes and the distribution of the sky factor: Proposal for a sky factor calculation system
- Study on the spatial allocation of evacuation sites for two-step evacuation
- Role of the temporary mall in the commercial revival after the East Japan Great Earthquake Disaster: A case of three cities on the south coast of Iwate prefecture
- Changes in social environment and the local role of the ex-family housing of the US forces in Fussa and Mizuho, Tokyo
- Study on factors and measures for realizing smart cities focusing on smart houses and electric vehicles
- Study on creating a home palliative care system for end-of-life cancer patients living alone
- Study on the narrow street arrangement measures aiming at the improvement in disaster prevention performance of built-up areas in Tokyo wards
- An empirical study on rebuilding local landscapes and self-government in a municipality

Paths after Graduation

recent graduates from the former Department of Urban Science

Faculty members (Tokyo Metropolitan University, Fukushima University, Japan Women's University); national government officials (Ministry of Land, Infrastructure, Transport and Tourism); local government officials (Tokyo Metropolitan Government, Shibuya City Office, Shinjuku City Office); Urban Renaissance Agency; Mori Trust; Taisei Corporation; Keio Corporation; Tokyu Corporation; Nihon Sekkei; Pacific Consultants; Ichiura Housing & Planning Associates; Daiwa House Industry; Aeon Mall; Recruit Jobs; other.



Inquiries about entrance examinations:
Dept. of Academic Affairs, Graduate School of Urban Environmental Sciences, Tokyo Metropolitan University (Minai-Osawa Campus Building No.9, 5F)
TEL: +81-42-677-1111 (Main) (Ext. 4021)
Open: Monday-Friday 9:00-12:30/13:30-17:00

Other inquiries:
Office of Administration, Department of Urban Science and Policy (Minami-Osawa Campus Building No.9, 5F)
TEL: +81-42-677-1111 (Ext. 4271) E-mail: usswww@center.tmu.ac.jp

Capacity

Master's Program: 15 students Doctoral Program: 5 students

Entrance Examinations

The entrance examination for university students and working adults is scheduled in summer (August) and winter (February).

*Students who complete undergraduate programs with good results (based on GPA) at Tokyo Metropolitan University and other universities in Japan are eligible to apply for a waiver for the written examination.

Overview

- The Department of Urban Science and Policy (DUSP) is dedicated to helping to realize sustainable urban development by cultivating people who can develop a comprehensive picture of the modern city with its dynamic transformations; visualize how cities can become safe, comfortable places for residents; and undertake analysis and research from spatial, institutional, social, and other perspectives.
- Our Master's Program provides graduate students with expert knowledge and practical experience as practitioners and researchers in each policy field and academic field of urban studies. The Doctoral Program, via PhD dissertation, develops students' expertise as independent scholars in urban studies and as leading practitioners.
- DUSP supports collaborative research and education with municipal governments and community and public organizations, as well as interactive relationships with Asian partner universities. Graduate students can take an active part in learning internationally, including through student exchange programs.

Curriculum

- The department provides a multidisciplinary curriculum that teaches the techniques needed to analyze urban phenomena and helps students develop a multi-faced understanding of the types of public policy that can be applied in each policy area. Furthermore, the department incorporates practical learning activities involving collaborative research with organizations such as public agencies that decide and implement urban policy, private-sector firms, nonprofit organizations, and local community organizations.
- The diverse needs of graduate students, ranging from learning practical knowledge and skills to conducting research studies, are met in the complete Master's Program by the students submitting research papers for typical policy issues instead of a Master's thesis.

Lectures & Seminars in Master's Program

Urban Analysis / Advanced GIS Seminar / Participatory Design Studio / Workshop Design Studio / Study of Hazards in Society / Cartography of Natural Environment and Tourism / Urban and Environmental Economics / Urban Environmental Planning / Urban Policy and Legal Affairs / Local Environmental Administrative Law / Law and Economics / Behavioral Law and Economics / Public Finance / Municipal Government and Administration / Introduction to Urban Sociology / Urban Community / Civil Society Study / Theory, Research, and Practice in Urban Health and Well-being / Other



AIBA, Shin

Professor•Doctor of Engineering

- City Planning
- Community Design
- Workshop Design Method
- Participatory Design Studio
- Workshop Design Studio

E-mail: aib@tmu.ac.jp
URL: <http://www.comp.tmu.ac.jp/shinaiba/frame2.htm>



Micro urban design by students in Participatory Design Studio.

My research field is the theory and practice of city planning and community design. My research areas are the problem of shrinking cities in Japan, participatory design methods for micro-urbanism of small spaces in shrinking cities, and community design in East Asian countries. My laboratory has sites in Tokyo for urban design experiments and practical study.



ASAH, Chisato

Professor•Doctor of Urban Science

- Evaluation Research
- Cost-Benefit Analysis
- Infrastructure
- Urban and Environmental Economics

E-mail: asahi@tmu.ac.jp
URL: <http://upc2107.com/>



Field research in urban and regional areas to improve data-based analysis.

We focus on economic analyses of the effects of policy. Realizing sustainable regions requires the effect of public policy, including environmental externality or risk, to be analyzed. The lecture examines methods for evaluating research: cost-benefit analysis, on which economic evaluation is based, and multi-criteria analysis for multi-dimensional criteria. The seminar discusses empirical analysis for evaluating decision making.



ICHIKO, Taro

Professor•Doctor of Urban Science

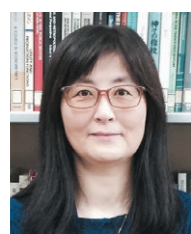
- Disaster Research
- Pre- and Post-disaster Urban Planning
- Disaster Reduction Planning
- Cartography of Natural Environment and Tourism
- Study of Hazards in Society

E-mail: ichiko-taro@tmu.ac.jp
URL: <http://disaster-research.cocolog-nifty.com/blog/>



Design of a game about T-shelters for pre-disaster planning.

Natural disasters pose severe problems in any metropolis. In Tokyo, there are a particular concern for M7 earthquakes. Countermeasures for disaster reduction, like shake-proof buildings and preparing evacuation spaces, have been installed. Adding to that, pre-disaster planning for a long-term recovery have been advanced. It's vital for planning a resilient city to learn both pre- and post-disaster activities.

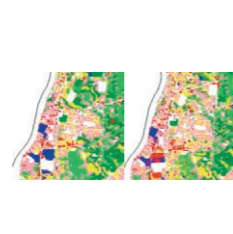


ITO, Fumiko

Professor•Doctor of Engineering

- Urban and Regional Planning Evaluation
- Urban and Regional Analysis
- Environmental Psychological and Behavioral Analysis
- Urban Environmental Planning
- Advanced GIS Seminar

E-mail: itofumi@tmu.ac.jp
URL: <http://www.comp.tmu.ac.jp/fiweb/>



Prediction of land use change with a neural-network model.

My research interests focus on urban planning and project evaluation via a mathematical approach and Geographic Information Science. The residents and workers in a city have various impressions and behavioral patterns. I aim to provide a method for measuring how they are affected by the city environment to improve city living.



KANEKO, Akira

Associate Professor•M.A. (Economics)

- Public Finance
- Local Public Finance
- Public Economics
- Public Finance
- Public Policy

E-mail: akaneko@tmu.ac.jp
URL: <http://www.tmu.ac.jp/stafflist/data/ka/398.html>



Japan's public finance.

This course presents a theoretical analysis of Japan's public finance covering expenditure and revenue analysis. Japan's local public finance is linked to the national finance, so we analyze the relationship between central and local governments. The course equips students to analyze the Japanese economy comprehensively from various viewpoints.



MATSUI, Nozomi

Professor•M.A. (Law)

- Public Administration
- Urban Administration
- Bureaucratic Systems
- Municipal Government and Administration

E-mail: matsui-nozomi@tmu.ac.jp
URL: <https://sites.google.com/site/nozomimatsui/>



Important preservation districts for groups of traditional buildings.

My field is public administration and management in local governments. My research interests include the decision-making process and coordination system, formulation and implementation of master plans, human resource management in public administration management, public facilities management, and public-private partnerships.



NAGANO, Motoki

Associate Professor•M.A. (Political Science)

- Public Administration
- Local Government Studies
- Local Governance
- Introduction to Qualitative Research Methodology
- Theory and Practice in Urban Institutions

E-mail: nagano@tmu.ac.jp
URL: <http://researchmap.jp/read0205195/>



Citizenry workshop for evaluating municipal projects [Saitama city].

My research focuses on citizen participation in local governance. Current topics include "Citizen participation in municipal planning and project evaluation" and "Technocracy and democracy in advisory committees and municipal assemblies". My seminar discusses theories of urban politics and administration in political science, improving analytical capabilities in practices and policy debate in modern cities.

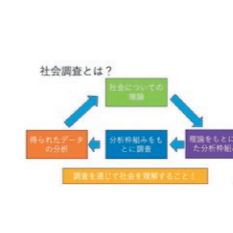


OHTSUKI, Shigemi

Associate Professor•Ph.D. (Sociology)

- Multicultural Coexistence
- Community / Social Participation
- Social Research (Quantitative and Qualitative Approach)

E-mail: sohtsuki@tmu.ac.jp
URL: <http://www.tmu.ac.jp/stafflist/data/a/336.html>



Cycle of social research.

How can people with different social backgrounds live together in the same society? I study the coexistence between Japanese people and foreign nationals, community participation by people with different origins and ages, and the relationships between people with different educational backgrounds or occupational statuses (social stratification). We will study current social trends through social research.



OKU, Mami

Professor•M.A. (Law)

- Environmental Law
- Administrative Law
- Urban Policy and Legal Affairs
- Urban Policy and Legal Affairs
- Local Environmental Administrative Law

E-mail: oku-mami@tmu.ac.jp
URL: <http://www008.upp.so-net.ne.jp/mamioku/>



Environmental law and policy at the levels of local and economic actors.

My research mainly focuses on EMS and environmental regulation, the mix of policy instruments in tackling climate change, and law and policy concerning the local environment and urban development. In my classes, based upon actual examples of urban issues, students are expected to understand the importance of an integrated implementation of legal and non-legal instruments in realizing the best policy performance.



SHIRAISHI, Ken

Professor•Ph.D. (Law)

- Law and Economics
- Economic Crime
- Behavioral Economics Corporate Crime
- Law and Economics
- Behavioral Law and Economics

E-mail: shiraishi-ken@tmu.ac.jp
URL: <http://www7b.biglobe.ne.jp/~shiraishi-ken/>



Solutions to social problems through legal system design.

Law and economics emphasizes an economic way of thinking about legal problems. In the place of actual policy decisions, an approach based on economics and law is necessary. The incentives emphasized by economics are particularly important. Students are required to design desirable institutions using law and economics, and the psychology behind incentives.